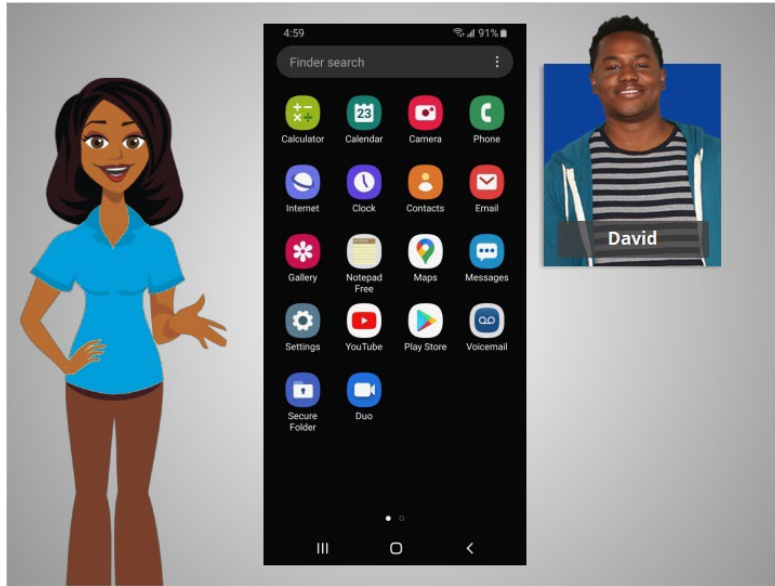
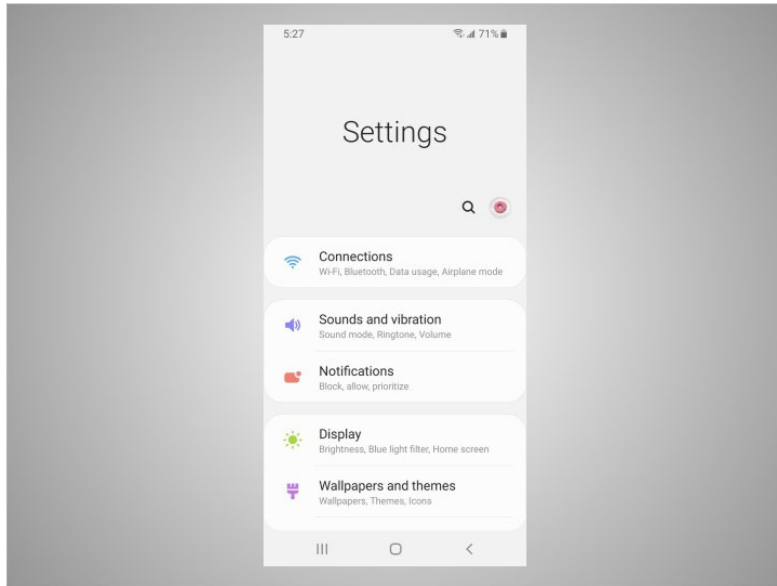


Using a Mobile Device (Android)

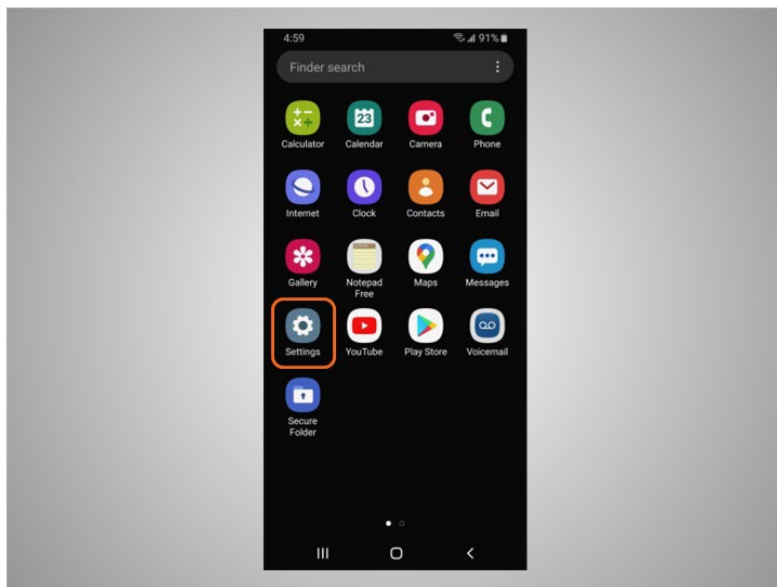
Mobile Device Settings



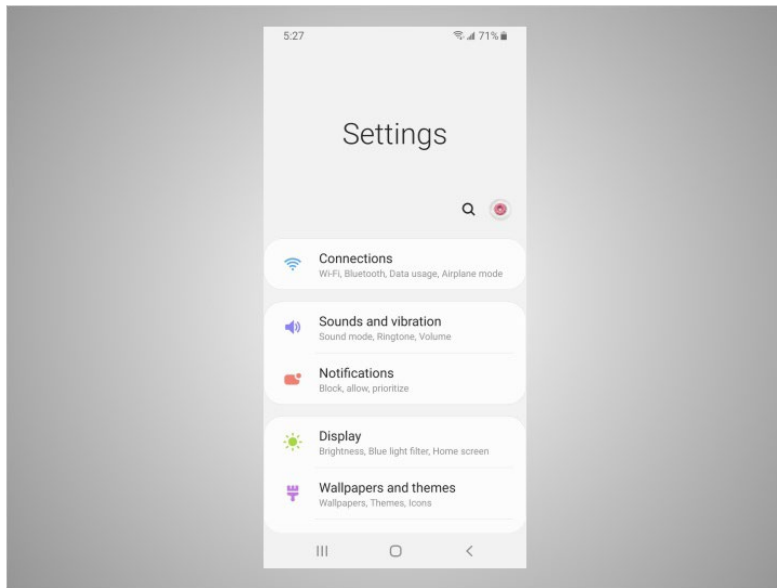
In the previous lesson David learned how to install and delete apps on his device. In this lesson David will learn about the settings on his mobile device. In today's example, David is using an Android mobile device.



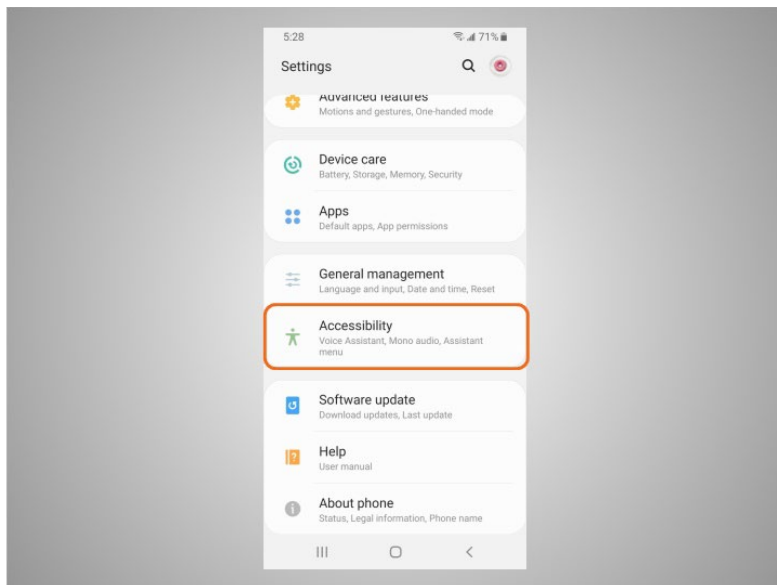
In the Settings app, you can view and change the settings on your mobile device, using accessibility features, biometrics and security preferences, software updates and more.



Accessibility settings on your mobile device can help you customize your phone to meet your visual, physical, motion, or hearing needs. To find the Accessibility features tap on Settings,

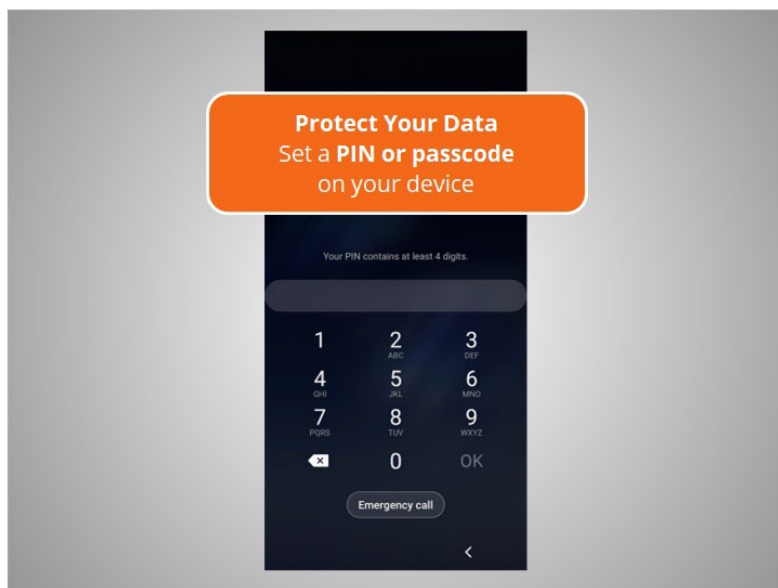


then scroll down the page

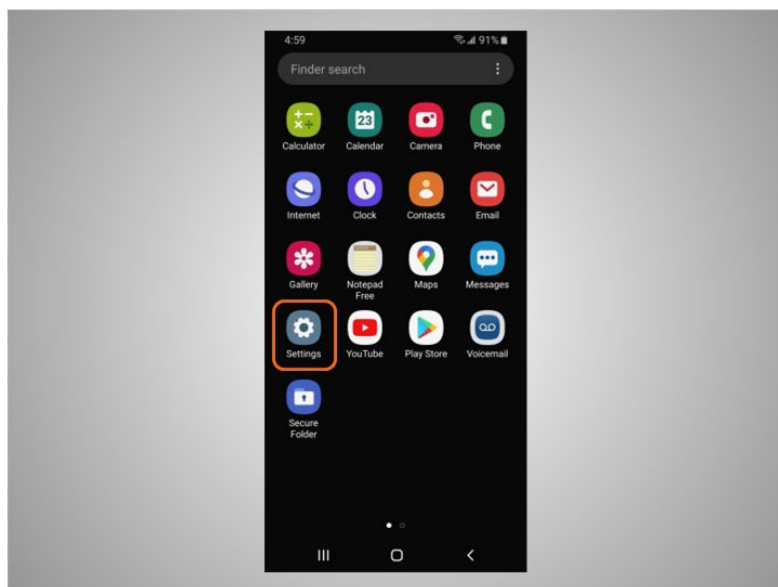


and tap Accessibility.

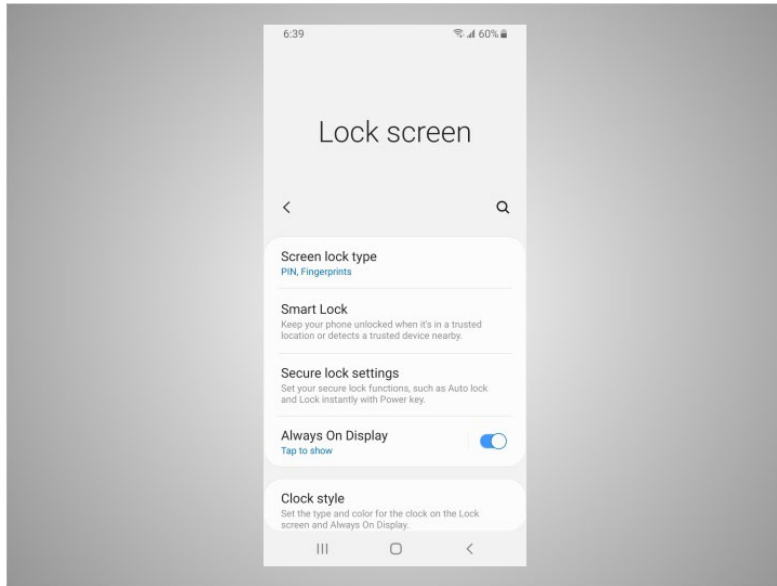
Here David can customize his device for his individual needs which include a voice assistant to get spoken guidance to navigate the device without needing to see the screen. He can change the text size, contrast and display color of his screen. He can also adjust the audio settings. Or he can enhance or change the touch interactions.



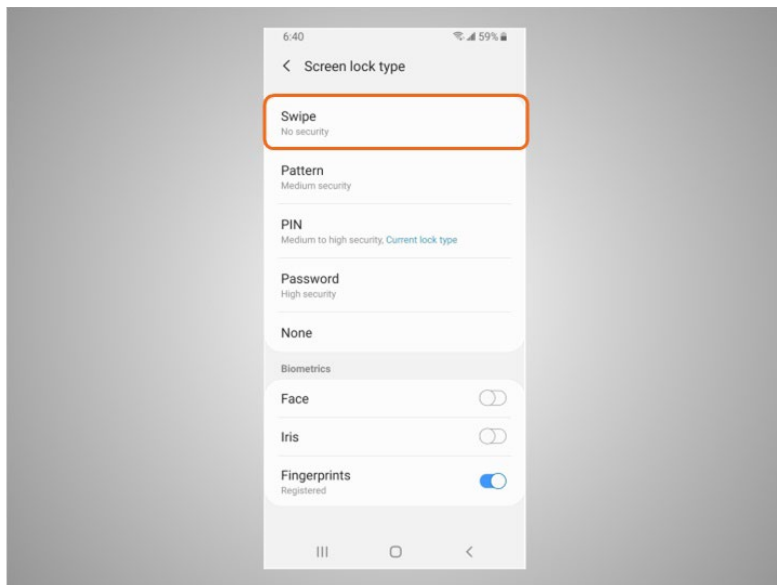
Mobile devices come with settings to help protect your device and your information. One of the most important things David can do is set a PIN or passcode to access and use his mobile devices. This will help protect the data that is stored on his device if it is ever lost or stolen. Each time David turns on his device or wakes up the screen, he will be asked to unlock it.



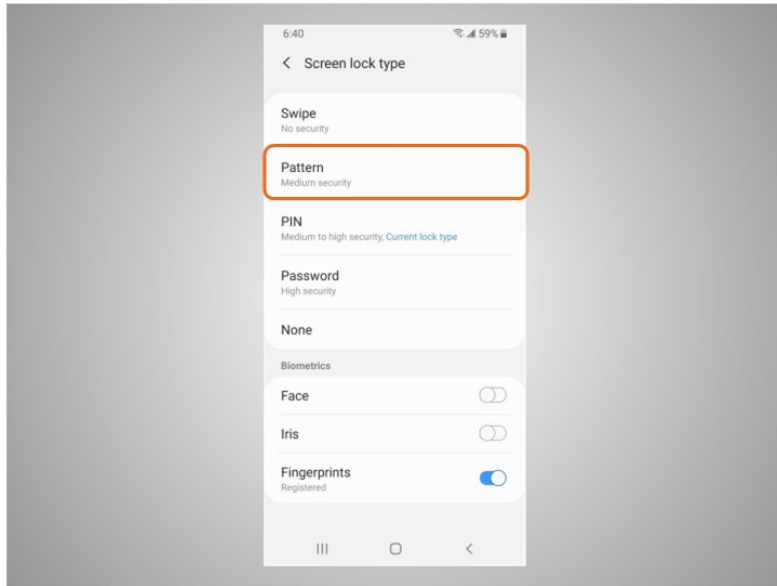
To set a PIN or passcode, tap settings,



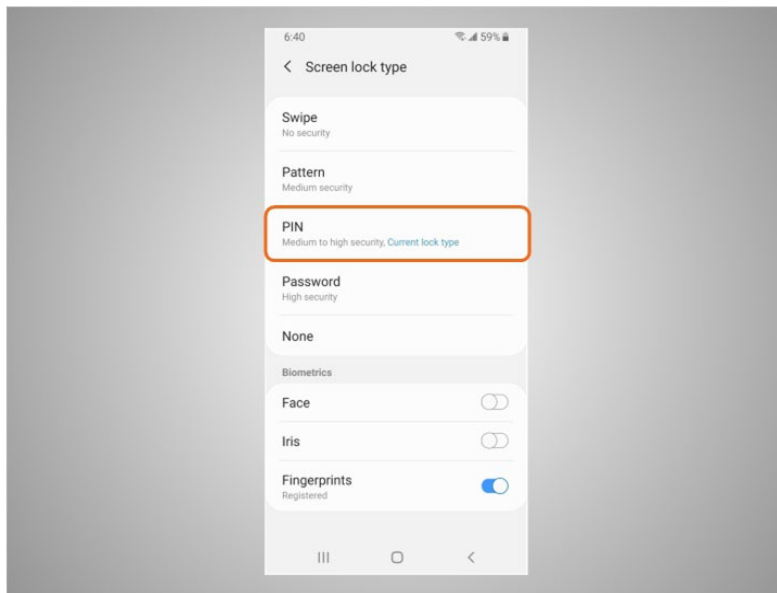
then look for the option to Lock the screen. There are several options to do this.



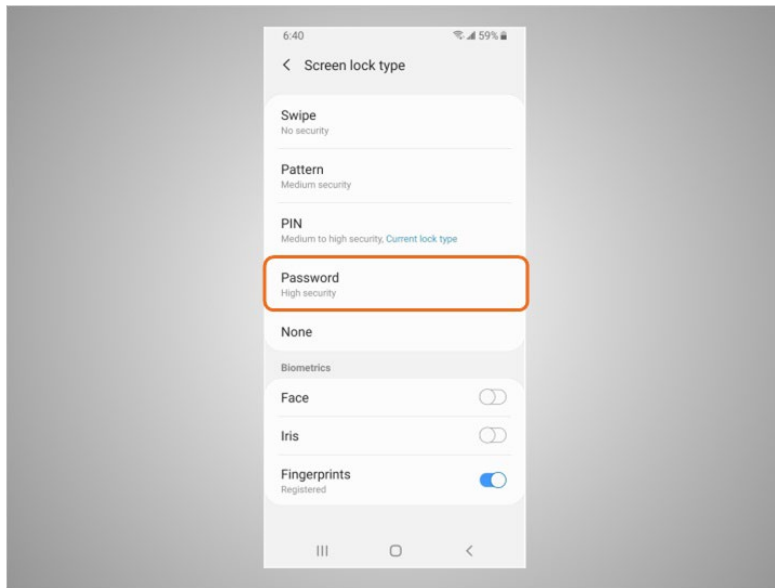
Swipe. You can log into your phone by swiping a finger across the screen. Any finger works so this does not protect the data on your phone.



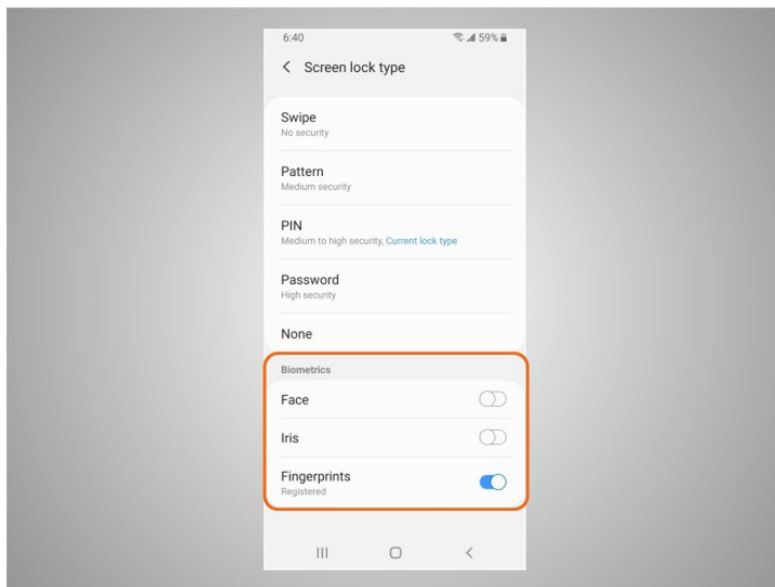
Pattern. You can log into your phone by drawing a simple pattern with your finger. You can only log into the phone if you draw the correct pattern.



PIN. You can log into your phone entering 4 or more numbers. You can only log into the phone if you enter the correct PIN number. This is the option that David has selected to secure the data on his phone.



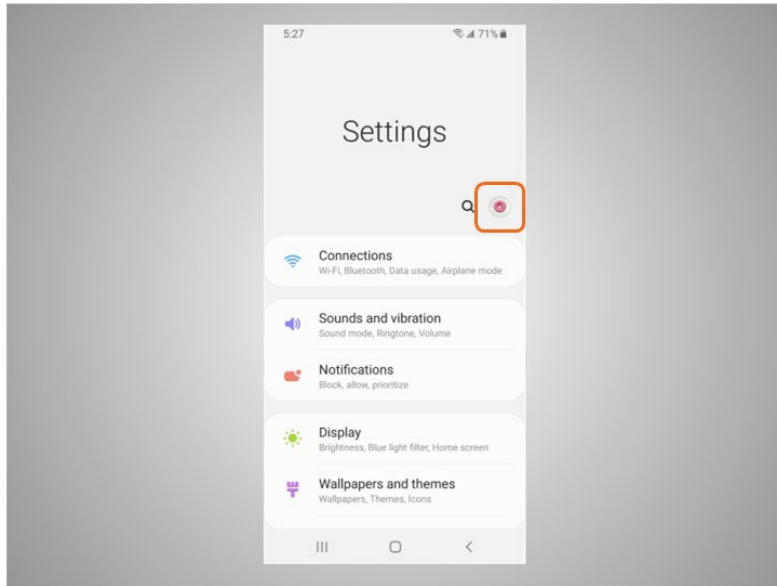
Password. You can log into your phone entering 4 or more numbers and letters. You can only log into the phone if you enter the correct password. Stronger passwords are longer passwords.



David can also unlock his phone using Face ID, iris scan or fingerprint. He would then follow the prompts to store that information in his settings before he can enable this feature.

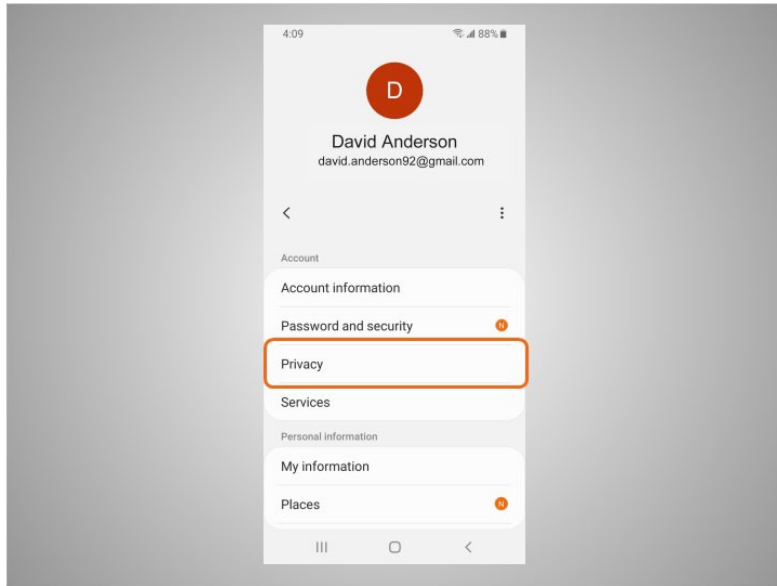


If David loses or misplaces his mobile device, he can turn on the Find My Mobile Device feature. Depending on your device you will either turn on the feature in the settings or using the Find My Mobile app. Google location services must be turned on to use this app effectively. If the device is stolen or permanently lost, David can use the Find My Device feature to remotely erase everything on his device. Remote controls must be enabled for this service to work so that you can remotely control your phone over the internet.

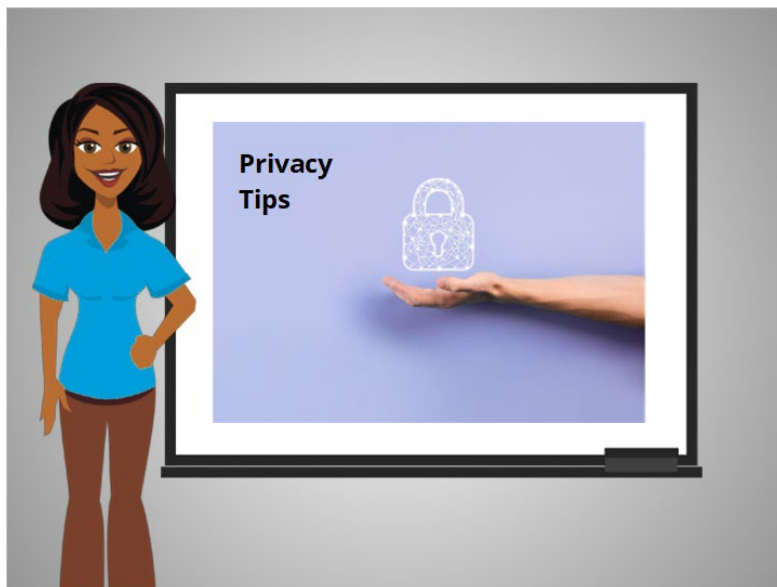


David will also want to check and set the privacy settings on all his mobile devices. Using his phone's privacy settings, he can decide which apps have access to information and data stored on his device, such as his location, photos and microphone.

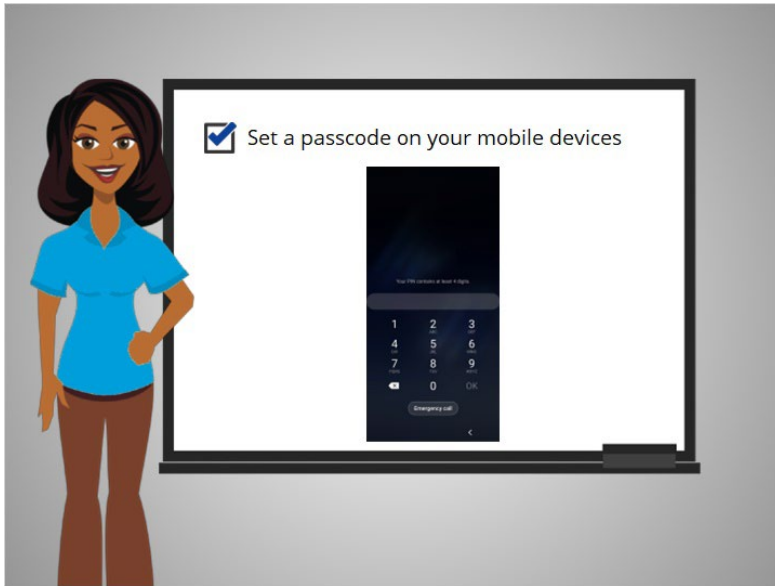
To access the privacy settings, David taps the donut icon,



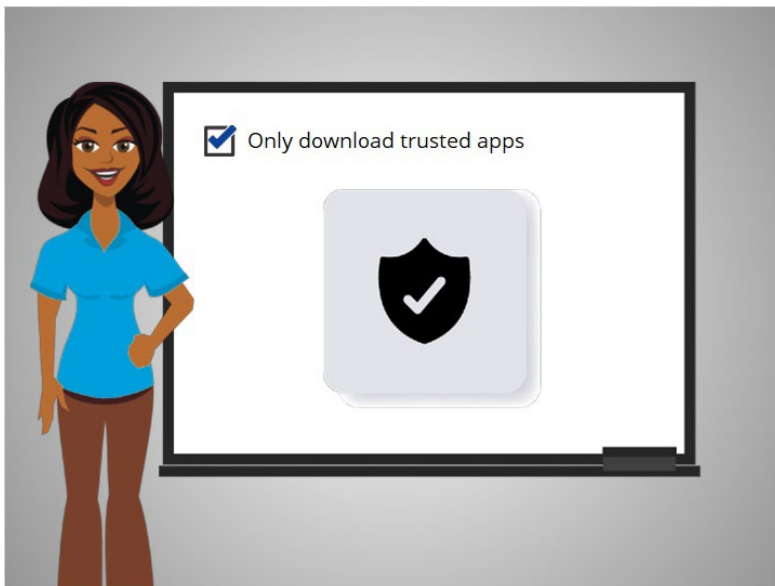
then taps Privacy and follows the prompts. Depending on the device manufacturer the way you set your privacy settings may be different. With the variety of Android mobile devices, you may notice slight differences between your device and this example.



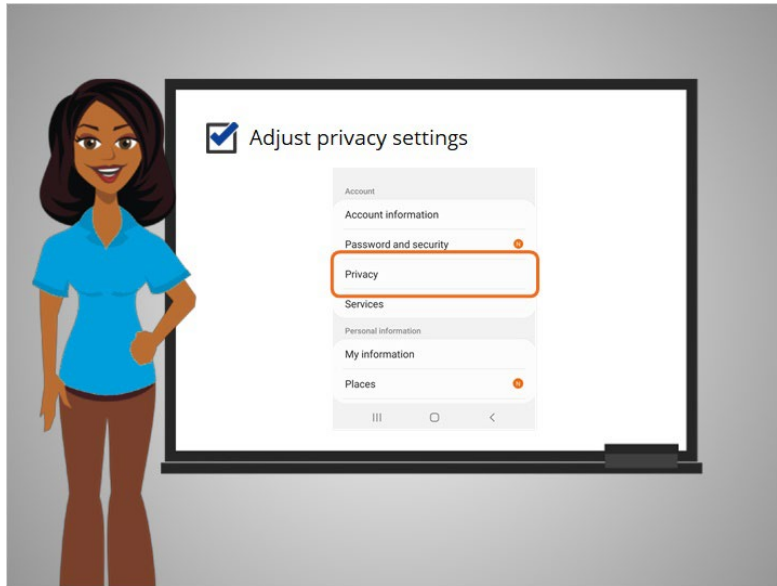
Here are some other tips to keep your devices and information secure.



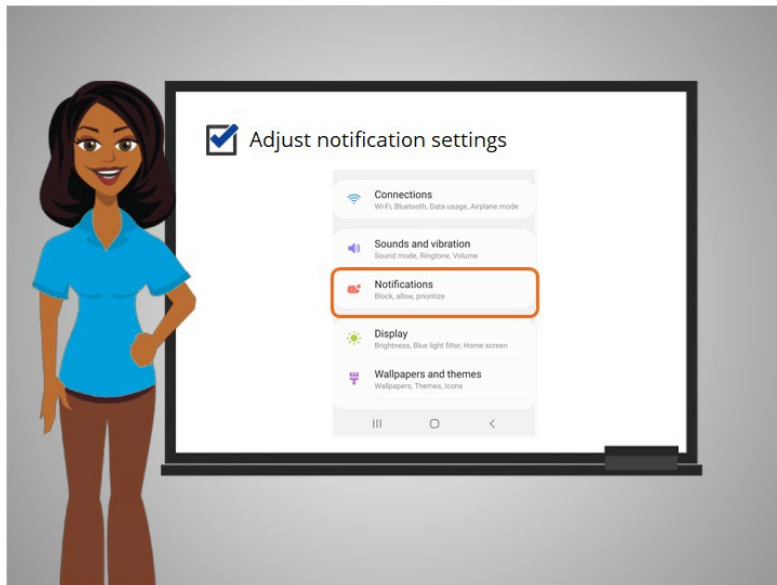
Remember to set a passcode on all of your mobile devices to prevent someone from accessing the information stored on the device if it is lost or stolen.



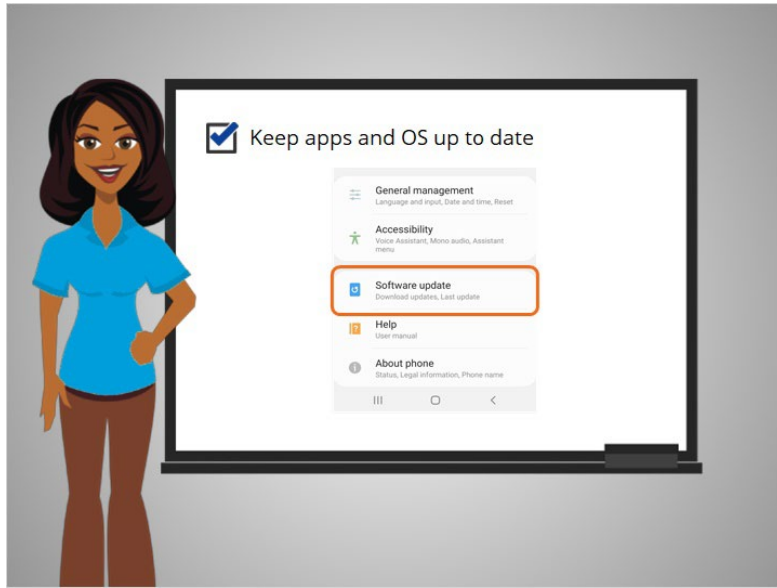
Only download trusted apps, which can be determined by reading reviews, ratings, and privacy statements.



Review the privacy settings on your device and adjust your settings to control which apps have permission to access your camera, location, microphone and personal information.



Adjust your notifications to change how much content will be displayed on the lock screen when receiving incoming messages.



Make sure that you check the apps and operating system are running the most up to date versions available or set these to automatically update.



Congratulations, you helped David learn about all of the useful features when using his Android mobile device. In the practice section, join David to practice what we have learned in this course.